

FANTOM

FR-8 PRO 2.0 / FR-10 PRO 2.0 ESC QUICK GUIDE

SPECIFICATION

Models	FR-10 PRO 2.0	FR-8 PRO 2.0
Cont. Current	160A	220A
Burst Current	760A	1000A
Input Voltage	2S-3S LiPo	2S-4S LiPo
BEC Output	6.0V, 7.4V/4A (Switch BEC)	6.0V, 7.4V/6A (Switch BEC)
Size(L*W*H)	37.0 x 38.2 x 31.5mm	55.2 x 40.2 x 36.5mm
Weight	96g	155g
ESC Programming Via	Mobile Phone APP	Mobile Phone APP
Firmware Upgrade	Supported	Supported
Waterproof	No	No
Car Applicable	1/10th Off-Road/On-Road Racing	1/8th Off-Road/On-Road Racing

FEATURES

- Designed for the highest level of competition, with advanced firmware, for the ultimate tuneability and drive-ability!
- Full aluminum case and heat sink design with highly efficient heat dissipation.
- Plenty of adjustable parameters allows adjusting the settings for any type of racing, such as modified, stock, zero timing, etc.
- 32-bit microprocessor supports more powerful processing capability and more accurate motor output.
- Enhanced throttle response, excellent acceleration, linearity and drive-ability.
- Multiple protection features: Low voltage cut-off protection, over-heat protection, and throttle signal loss protection.
- Built-in Bluetooth allows programming the parameter settings and firmware upgrades via app (supports real time programming, no need restart the esc).
- Data logging for real-time maximum ESC temperature, motor RPM, Voltage and Advance Timing and more.

SENSORED MODE

When using a Sensored Brushless motor, the Blue motor wire (A), Yellow motor wire (B) and Orange motor wire (C), of the ESC, must be connected with the Sensored motor wire terminals (A,B,C) respectively (Blue, Yellow, Red for 1/8 ESC). The motor sensor cable must also be connected to the "Sensor" socket on the ESC. Do not change the sequence of the wires.

SENSORLESS MODE

When using a Sensorless Brushless motor, the Blue motor wire (A), Yellow motor wire (B) and Orange motor wire (C), of the ESC, must be connected with the Sensorless motor wire terminals (A,B,C) respectively (Blue, Yellow, Red for 1/8 ESC). Do not change the sequence of the wires. Note: If the motor operates in reverse rotation, this can be changed in the programming settings.

CONNECTION TO RX

- White wire RX-Signal
- Red wire RX+6.0V
- Black wire RX-

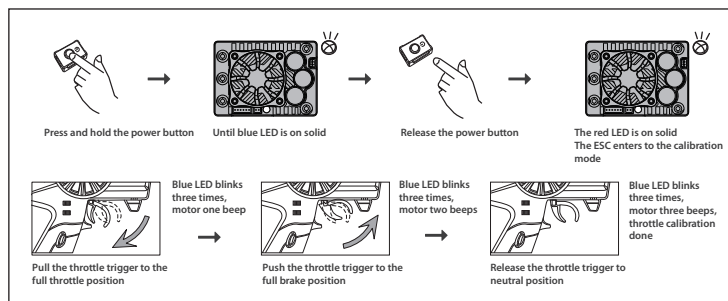


MOBILE APP

Download the CONNECT-1 ESC app to your device using the corresponding QR code below.



THROTTLE RANGE CALIBRATION



LED STATUS

1. During operation

Throttle Position	Blue LED	Red LED
Neutral	Blinking	OFF
Full Throttle	ON	ON
Full Brake	OFF	ON

Note: When you pull the throttle from neutral position to full throttle position, the Blue LED will blink, and the blink frequency will go faster when the throttle goes higher.

For complete instruction manual, download it at:
www.fantomracing.com/downloads



15170 Dickson Rd,
 White Pigeon, MI 49099
 ph. 269.483.0200
www.fantomracing.com
 social: @fantomracing